

# C<sup>2</sup>DH VISITORS' GUIDE

## Luxembourg Centre for Contemporary and Digital History (C<sup>2</sup>DH)

Maison des Sciences Humaines  
C<sup>2</sup>DH Secretariat  
11, Porte des Sciences  
L-4366 Esch-sur-Alzette

E-mail: [c2dh.secretariat@uni.lu](mailto:c2dh.secretariat@uni.lu)





# CONTENTS

1. Welcome to the University of Luxembourg
2. Map of Belval Campus
3. Accommodation
4. Getting to and around Luxembourg
5. More from Belval Campus



# Welcome to the University of Luxembourg Belval Campus

## Maison du Savoir

2, Avenue de l'Université  
L-4365 Esch-sur-Alzette

Central Administration

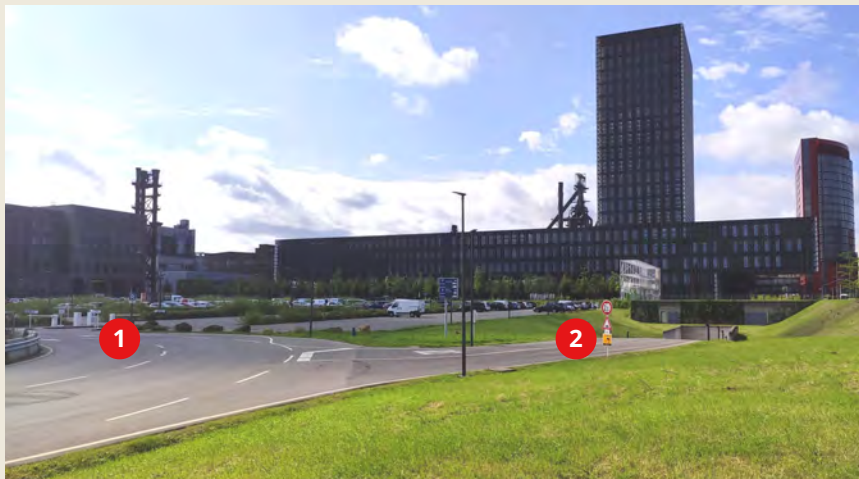


Lecture halls and teaching rooms



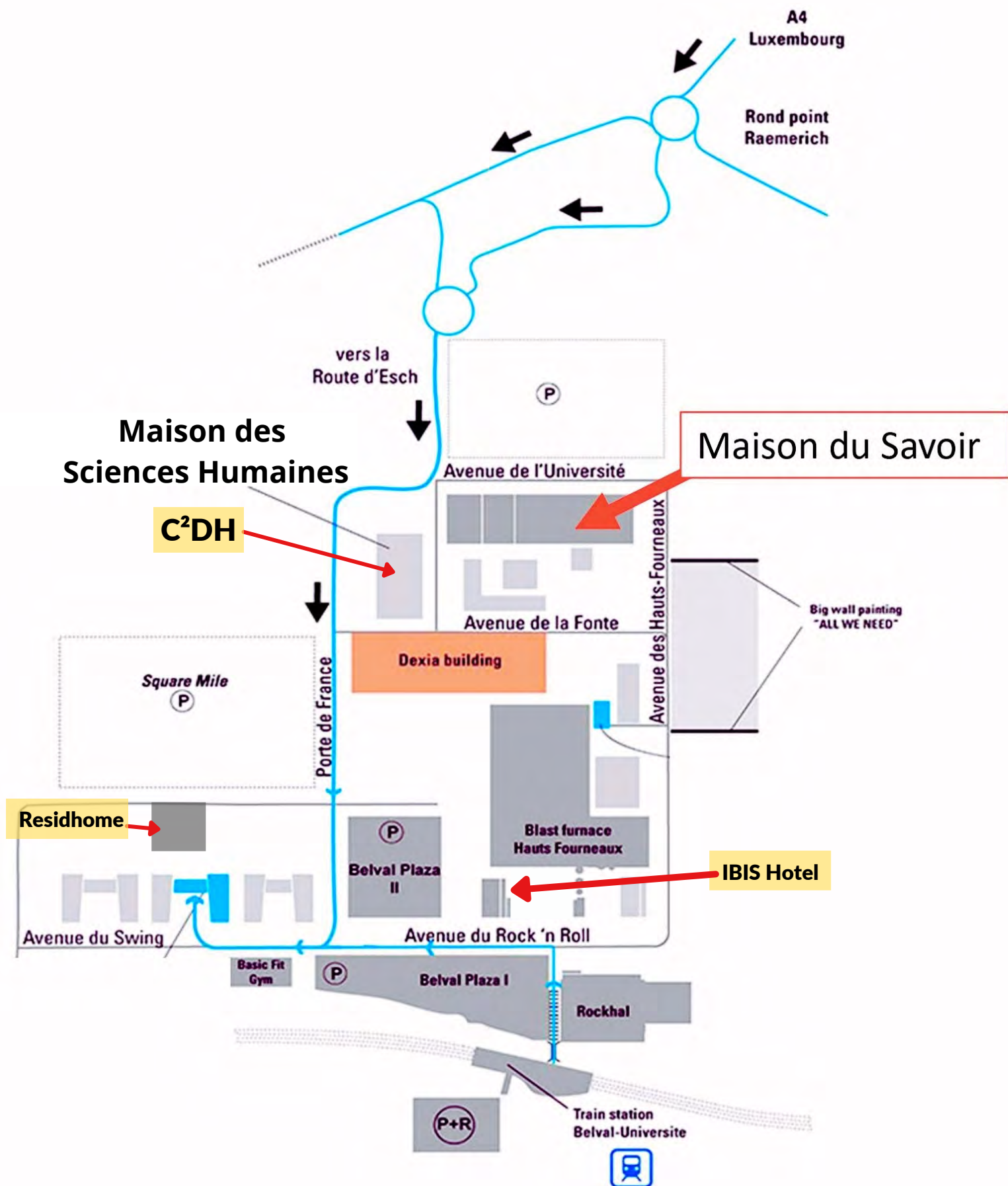
## Parking "Maison du Savoir"

*Boulevard des Lumières, 4*



- 1 Entrance open-air parking
- 2 Entrance underground parking

# Map of Belval Campus



## Accommodation



### Hotel IBIS Esch Belval

12 Avenue du Rock'n'Roll

L-4361 Esch-sur-Alzette

Tel: +352 261731

E-mail: [H7071@accor.com](mailto:H7071@accor.com)

Access:

- 190 m from Belval-Université train station and 700 m from the university.
- Closest bus stop: Av. Rock'n'Roll; buses 4, 7, 15.



### Residhome Appart Hotel

3 Boulevard du Jazz,

L-4370 Esch-sur-Alzette

Tel : +352 27 86 78 22

Access:

- 550 m from Belval-Université train station and 500 m from the university.
- Closest bus stop: Belval Um Bedding; buses 15, 306, 309, 332.



# Getting to and around Luxembourg

## Getting to Luxembourg city

- By plane: Findel airport (about 6km away from Luxembourg)
- By train: Luxembourg City railway station is about 20 min away from the city centre on foot and every 15 min there is train between Luxembourg and Belval.

Go to <https://www.cfl.lu> to check the trains' timetables.

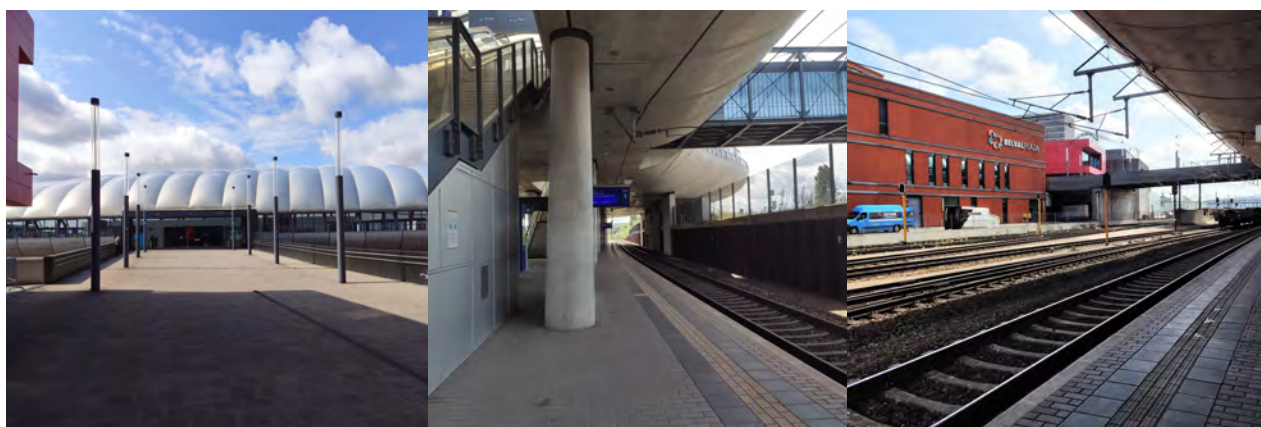
## Public transport in Luxembourg

- Once you have arrived in Luxembourg, be aware that the country's **public transport is free of charge** for all residents and non-residents.
- For your convenience, use the website of the Luxembourg transport information system to plan your trip (<https://www.mobiliteit.lu>) or their app (Mobiliteit.lu).

## Getting to Belval from Findel Airport

By public transport:

- Take the bus number **6** or **16** to "**Hamilius**".
- From "Hamilius" take the tram in the direction of "**Luxembourg, Gare Centrale**" to the terminus of the tram.
- From the Luxembourg Central Station (Gare Centrale), take the train **in the direction of Rodange or Pétange** with your final destination being the train station "**Belval-Université**".



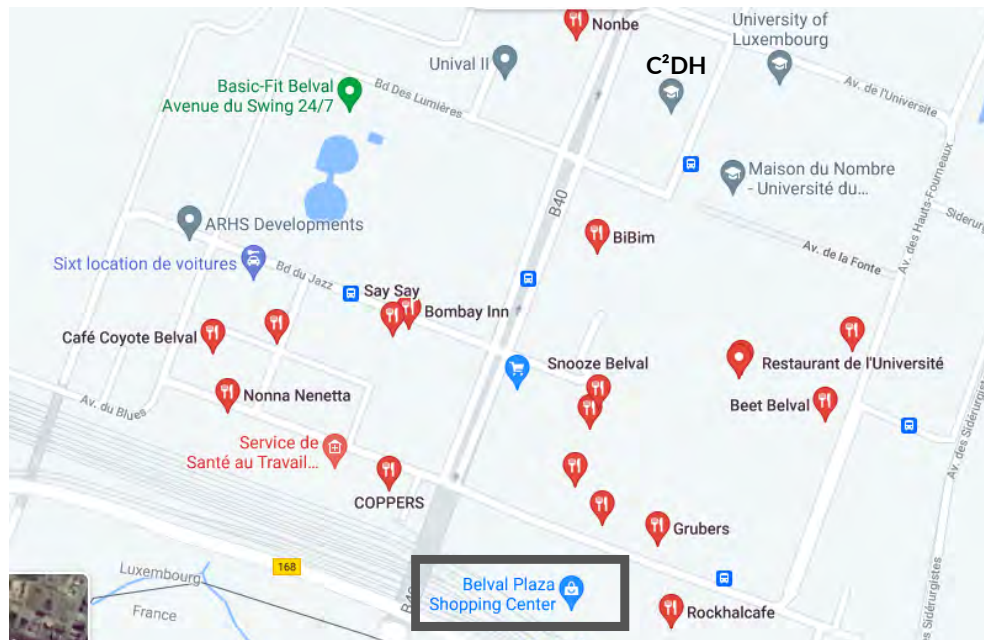
Belval-Université train station

By taxi:

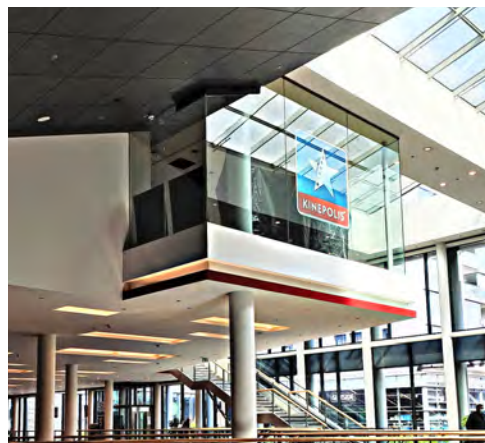
- If you wish to take a taxi, please use the following link to book one:  
<https://www.webtaxi.lu/>

## More from Belval Campus

Belval has a lot to offer - there are more than 20 cafés and restaurants, gyms, supermarkets, banks and ATMs and the biggest concert venue in Luxembourg (Rockhal).



In "Belval Plaza" shopping centre, you can find almost everything you need - supermarket Delhaize, the Kinopolis cinema, gym, hairdresser and others. Plus, supermarket Aldi is situated just across the street.



Cinema website: <https://kinopolis.lu/en/?main-section=presales>

